

# Brighton Community Needs Assessment

Hannah Murphy, RD, CNSC  
Clinical Nutrition Manager  
Platte Valley Medical Center



# Objectives

- Increase awareness of the Brighton community demographics as they relate to food insecurity.
- Discuss the health implications when food access is lacking.
- Gain perspective from community partners on what services are currently available to address food insecurity.
- Discuss challenges community members may face when accessing community services.

# Table Discussion

- Please introduce yourself and your organization.
- Share what you hope to gain from this workshop.



# Needs Assessment Background

- Platte Valley Medical Center (PVMC) conducts a community needs assessment every 3 years.
- The most recent PVMC Community Needs Assessment was released in October 2018.
- Report is available to the public by visiting:  
<https://www.sclhealth.org/locations/platte-valley-medical-center/about/community-benefit/community-health-improvement-plan/>
- There may be more updated information available through individual organizations than what is presented today.

# Community Needs Assessment Scope



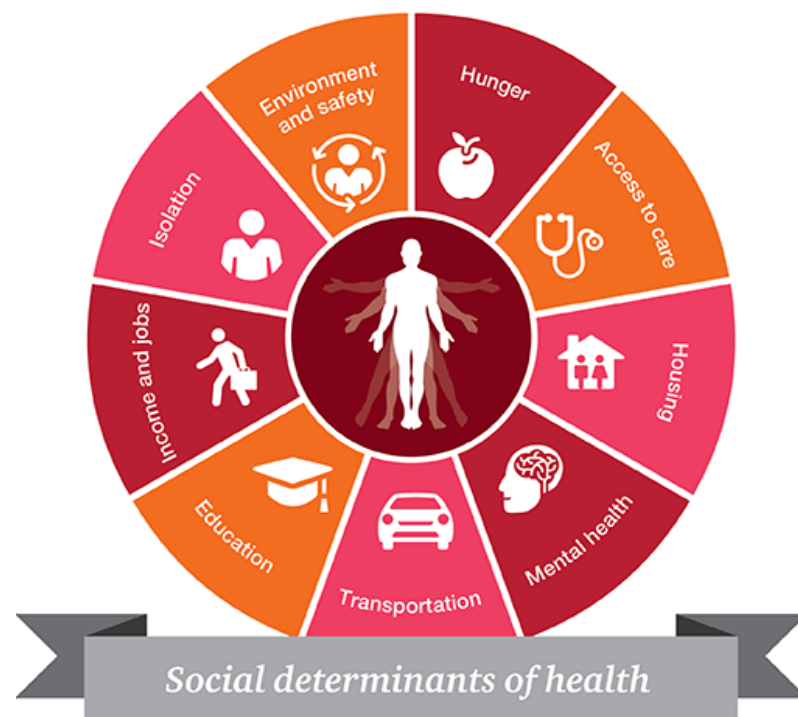
Community members and organizations will likely be in the scope shown

**Platte Valley Medical Center Service Area**

City	ZIP Code	County
Brighton	80601, 80602	Adams
Brighton	80603	Weld
Commerce City	80022	Adams
Ft. Lupton	80621	Weld
Henderson	80640	Adams
Hudson	80642	Weld
Keenesburg	80643	Weld

# Social Determinants of Health

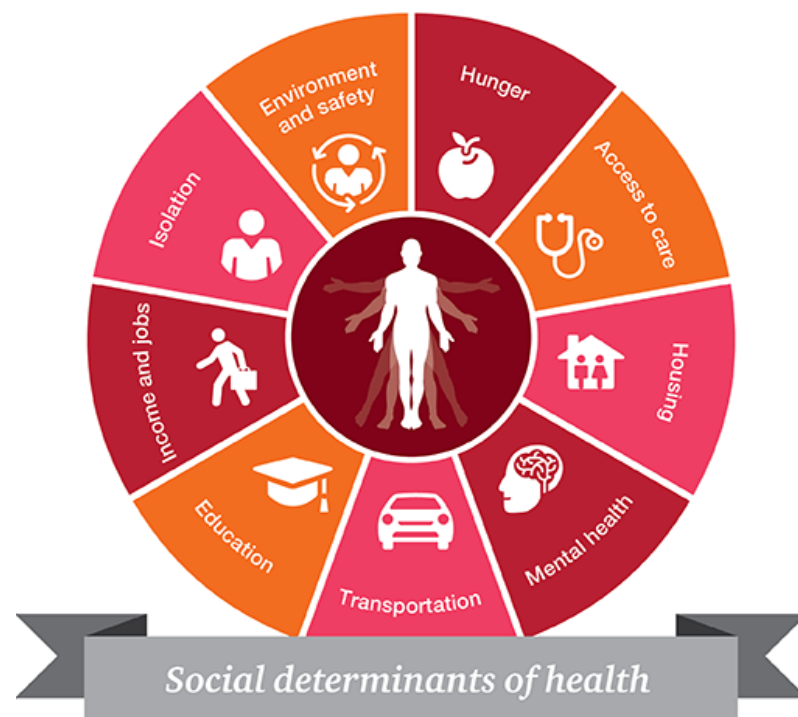
- Healthy People 2020 defines social determinants of health as “conditions in the environments in which people live, learn, work, play, worship, and age that affect a wide range of health, functioning, and quality-of-life outcomes and risks.”
- Healthcare Financial Management Association reports that social determinants account for up to 80 percent of a person's health status



# Food Insecurity (Malnutrition)

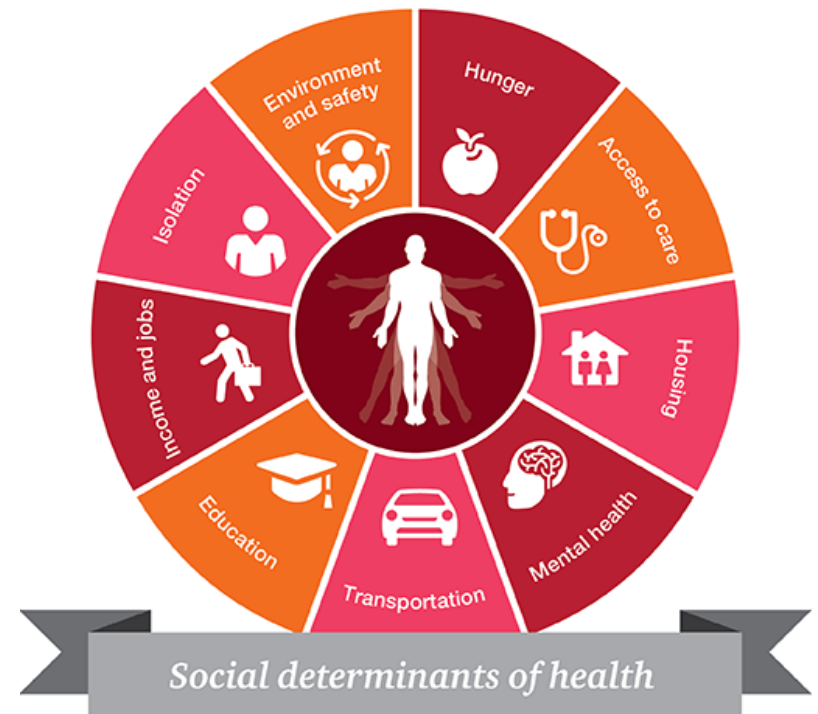
- Defined as “lack of proper nutrition, caused by not having enough to eat, not eating enough of the right foods, or being unable to use the food that one does eat.”

<https://youtu.be/iPNZKyXqN1U>



# Table Discussion

**Which statistics do you find most surprising on the placemat?**





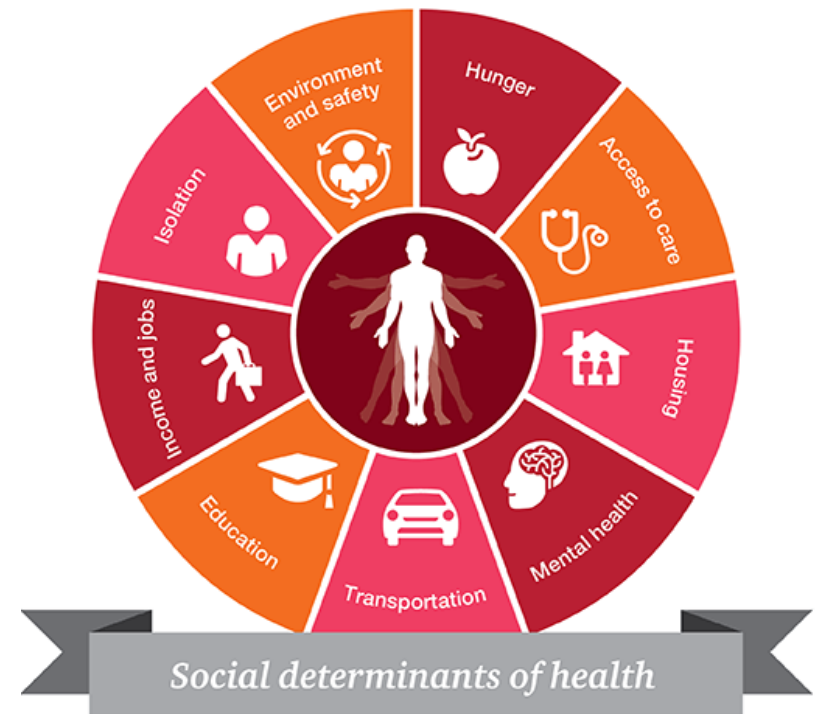
# Access to Care

- 87.8% of residents in the service area were insured. However, high deductibles and copays can be a barrier to accessing care.
- 17% of adults in Adams County had an unmet medical need because they were not able to afford care.
- The national benchmark for primary care physicians to patients is 1,030:1. In Adams County, the ratio is 2,320:1.



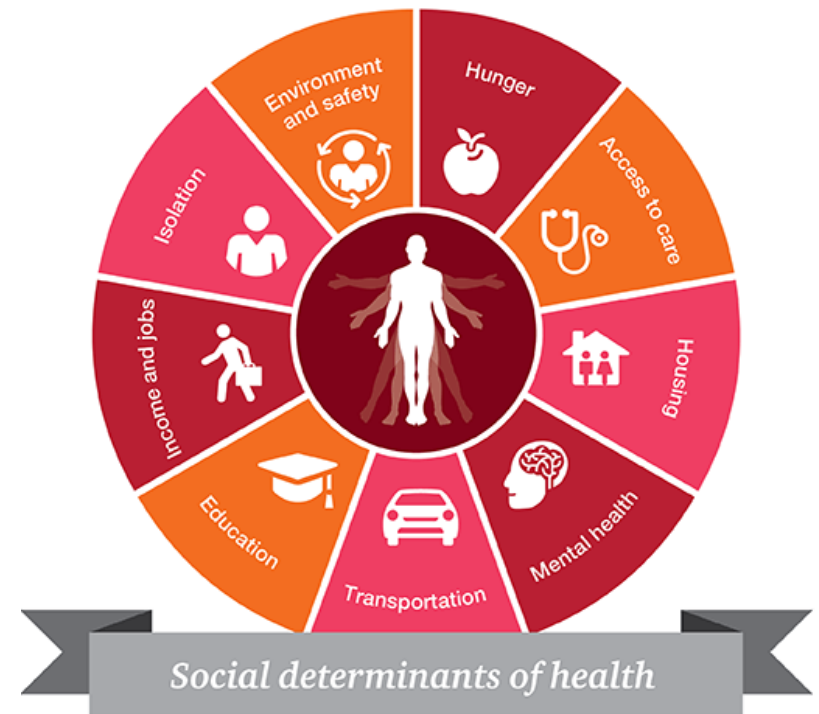
# Housing

- 23.2% of homeless individuals in Adams County were chronically homeless.
- Stakeholders identified that there is a housing crisis in Brighton and housing instability impacts the health of those in the community.



# Mental Health

- In Adams County, the ratio of the population to mental health providers is 422:1. The average ratio in Colorado is 392:1.
- Stigma surrounding mental health continues to be a barrier to obtaining care.
- Among postpartum women, 13.1% in Adams County had experienced symptoms of depression. These rates were higher than found in the state (9.6%).



# Transportation

- “The Brighton area lacks a robust transit system so transportation to health care services is a barrier and an issue for the community”
- For those that live in rural areas, access is an issue due to distance to care.



# Education

- Of the population age 25 and over, 16.6% had not received a high school diploma, which was higher than the state (9%).
- The high school graduation rates were 77.4% in Brighton School District 27J. The Healthy People 2020 objective for high school graduation is 87%.



# Income and Jobs

- The median household income for the hospital service area ranged from \$53,633 in Fort Lupton to \$101,105 in Brighton.
- In the service area, over 11.3% of the population was living at or below 100% of the Federal Poverty Level (FPL)
- In the service area, 28.9% were considered low-income, living at or below 200% FPL.



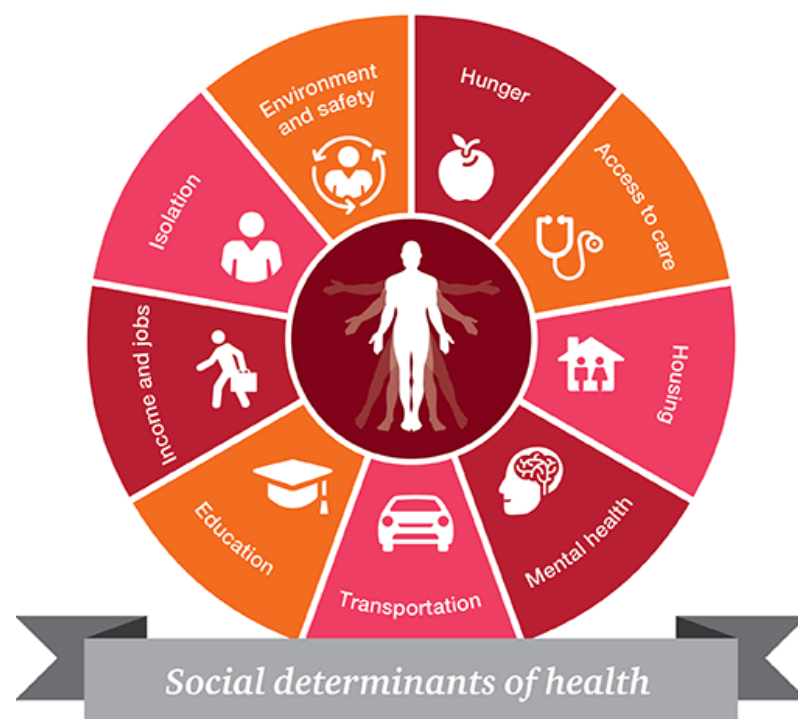
# Isolation

- Languages Spoken
  - 74.5% English
  - 23.6% Spanish
  - 1.8% Other Languages
- One issue noted by stakeholders was the shortage of bilingual health service providers.



# Environment and Safety

- “Those who are afraid to reveal their undocumented status are not accessing health care and available community services. For instance, kids are not getting enrolled in the Head Start program, even though they have legal status. Families are not coming forward to take advantage of support programs including food stamps and WIC. This will impact these families over a generation.”
- “The elderly are more prone to falls. The challenge is to develop a coherent prevention plan.”

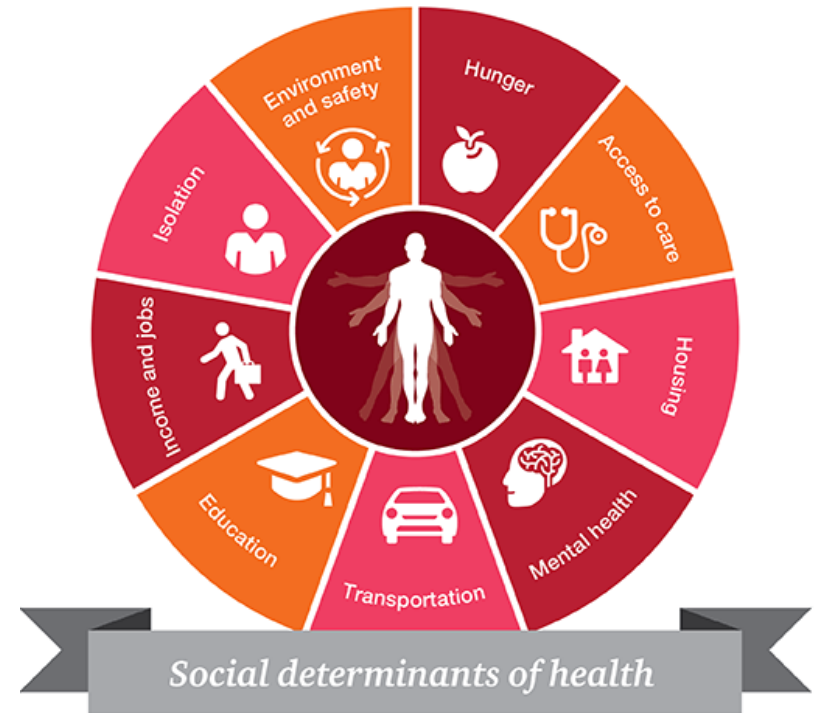




# Table Discussion

**1. What is your organization currently doing to address food insecurity?**

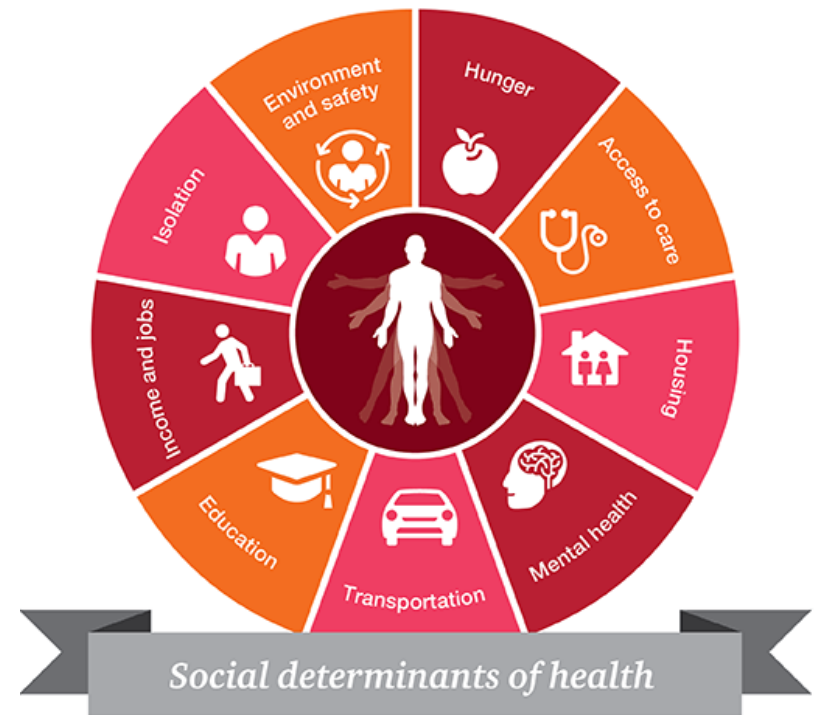
**2. What are some ways your organization would like to be more involved in addressing food insecurity?**



# Table Discussion

**3. What are the biggest barriers that prevent community members from accessing current community services?**

**4. What program or service would you like to have in the community to address the barriers you identified?**



# Community Health Investment Program Grant

- Grants are awarded quarterly by Platte Valley Medical Center
- Application can be downloaded on [sclhealth.org](http://sclhealth.org) or email [hannah.murphy@sclhealth.org](mailto:hannah.murphy@sclhealth.org)

